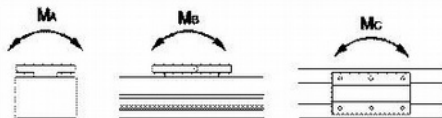


Linear Axis - LA40-BS

Parameter	Value	Value	Value	Unit
Motor Holding Torque	1	1	1	Nm
Ball Screw Diameter	12	16	16	mm
Screw Lead	4	5	10	mm/rot
Max Vertical Load	25	25	20	kg
Max Vertical Load	15	15	10	kg
No load speed	100	170	255	mm/s
Max Horizontal Speed	80	150	230	mm/s
Max Vertical Speed	40	90	50	mm/s
Rated Acceleration	500	500	500	mm/s ²
Position Accuracy	0.05	0.05	0.05	mm
Max Force	565	452	225	N
Service Life	20 000	20 000	20 000	km



Dynamic Permissible Torque
 Ma=2.5Nm Mb=1.3Nm Mc=1.3Nm



Linear Axis LA40-BS-300-10-C5 - Order Code Example

LA = Linear Axis

Axis Width

40 = 40 mm axis width

Screw and Belt linear module

- BS=Ball Screw linear module
- BL=Belt linear module
- PBS=Precise screw
- DBL=Double-rail belt
- HND=Hand-wheel screw

Effective Stroke

- 100-2000mm Screw linear module
- 100-4000mm Belt Linear Module

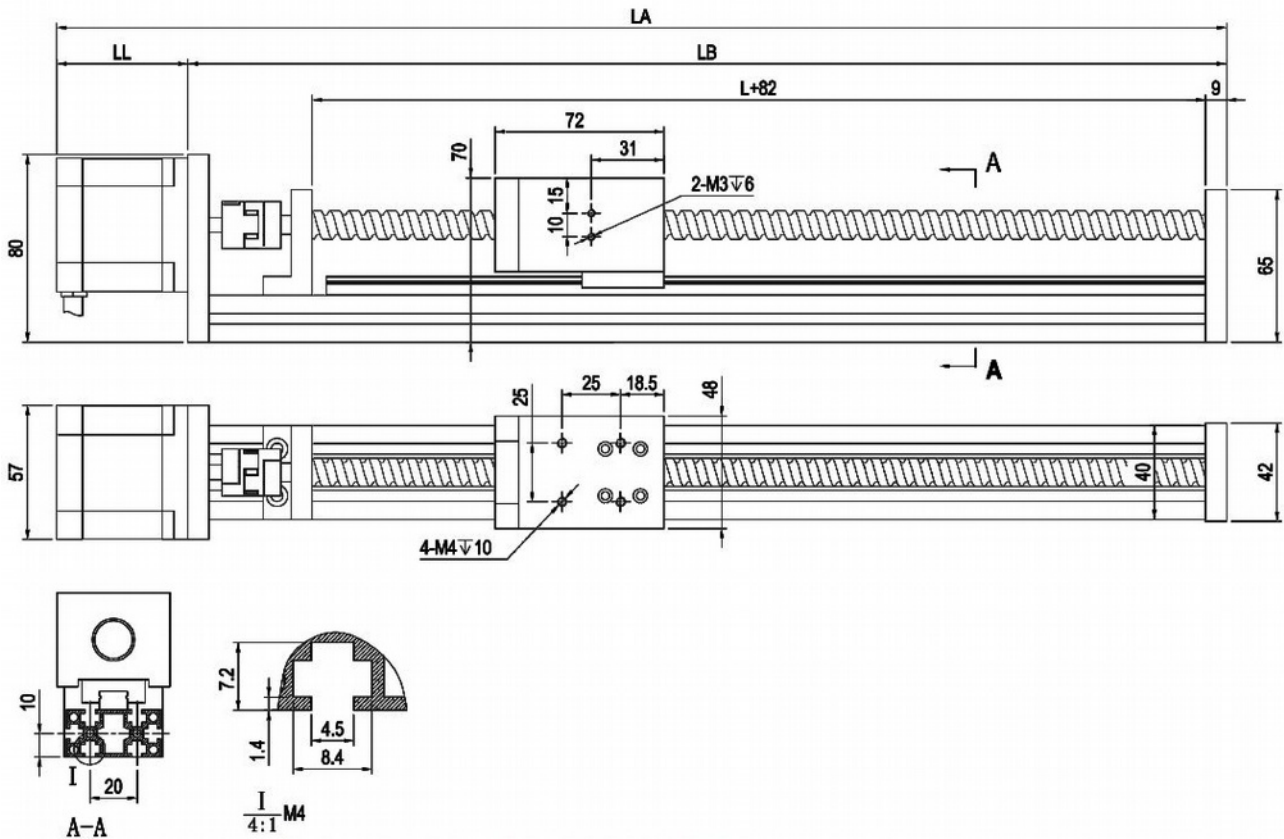
Screw lead mm/rot

- 05 mm
- 10 mm
- 16 mm
- 20 mm

Screw accuracy class

- C5
- C7

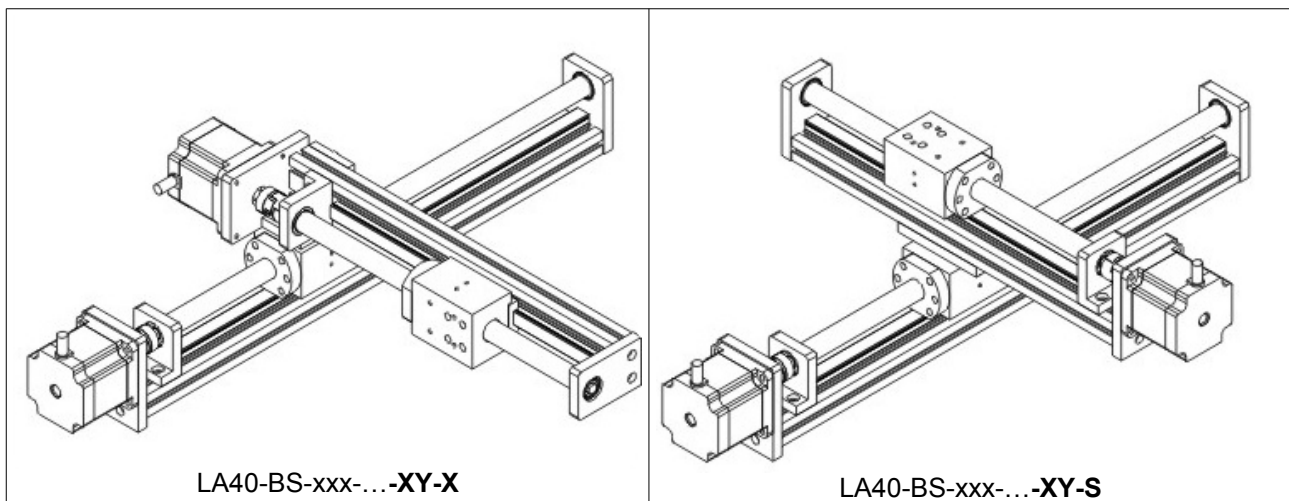
LA40-BS Dimensions

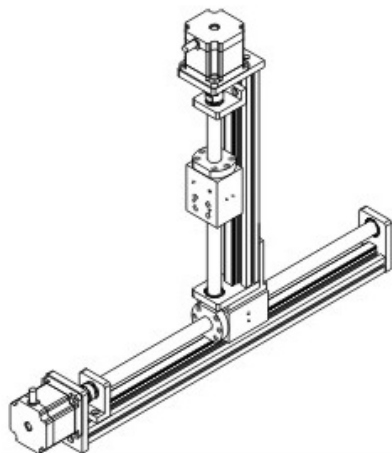


	LB	LL	LA
Stepper Motor 57x57	L+143	56	L+199
Stepper Motor 60x60	L+143	102	L+245
400W Servomotor	L+158	130	L+288

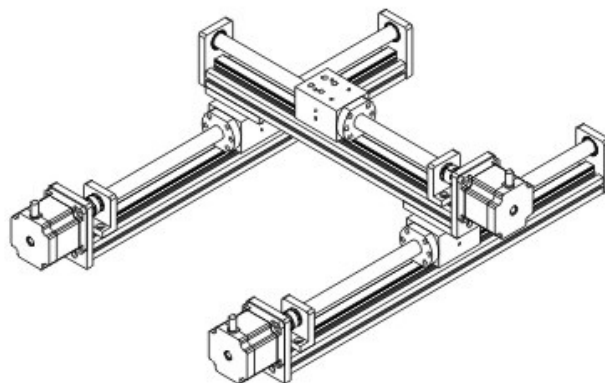
Stroke (mm)	50	100	150	200	250	300	350	400	450	500	600	700	800	900	1000
Total Length (mm)	250	300	350	400	450	500	550	600	650	700	800	900	1000	1100	1200
Weight (kg)	1.85	2	2.15	2.3	2.45	2.6	2.7	2.85	3	3.15	3.35	3.55	3.9	4.15	4.45

LA40-BS Ball Screw Linear Axis Configurations

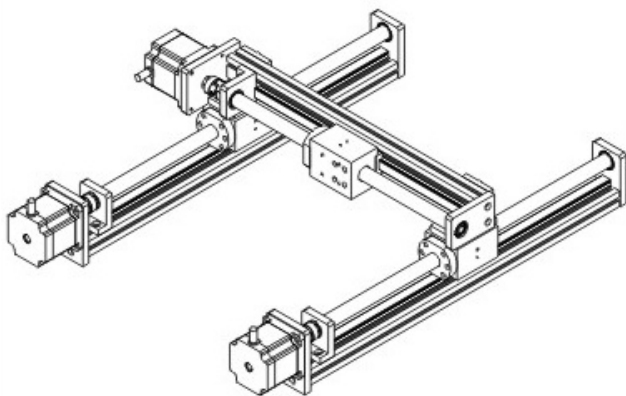




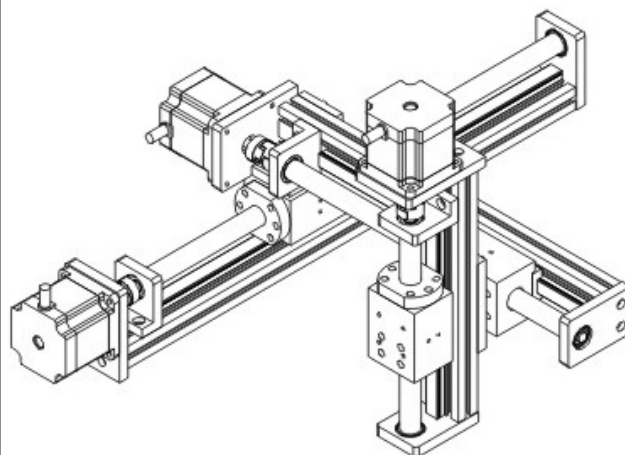
...-XY-T



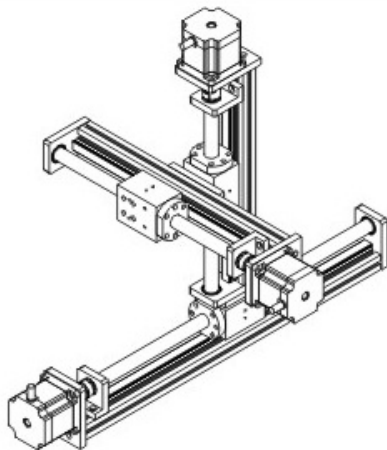
...-XY-H1



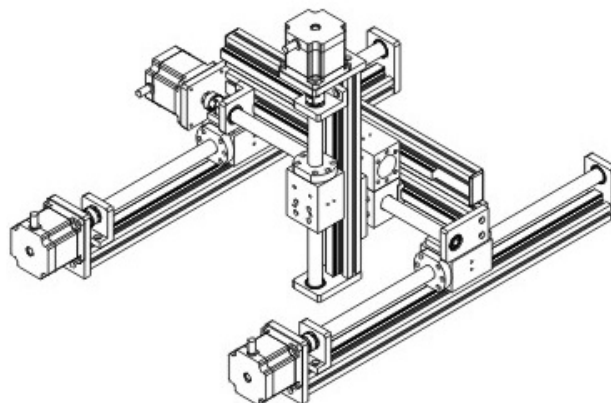
...-XY-H2



...-XYZ-X



...-XYZ-T



...-XYZ-L