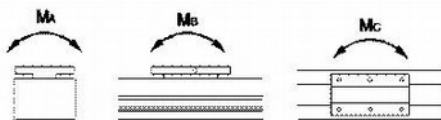


Linear Axis - LA80-BS

Parameter	Value	Value	Unit
Motor Holding Torque	3	5	Nm
Ball Screw Diameter	16	16	mm
Screw Lead	10	10	mm/rot
Max Vertical Load	40	40	kg
Max Vertical Load	20	20	kg
No load speed	220	320	mm/s
Max Horizontal Speed	210	320	mm/s
Max Vertical Speed	60	200	mm/s
Rated Acceleration	500	1000	mm/s ²
Position Accuracy	0.05	0.05	mm
Max Force	674	1123	N
Service Life	20 000	20 000	km



Dynamic Permissible Torque
 Ma=45Nm Mb=35Nm Mc=35Nm



Linear Axis LA80-BS-300-10-C5 - Order Code Example

LA = Linear Axis

Axis Width

80 = 80 mm axis

Screw and Belt linear module

BS=Ball Screw linear module
 BL=Belt linear module
 PBS=Precise screw
 DBL=Double-rail belt
 HND=Hand-wheel screw

Effective Stroke

100-2000mm Screw linear module
 100-4000mm Belt Linear Module

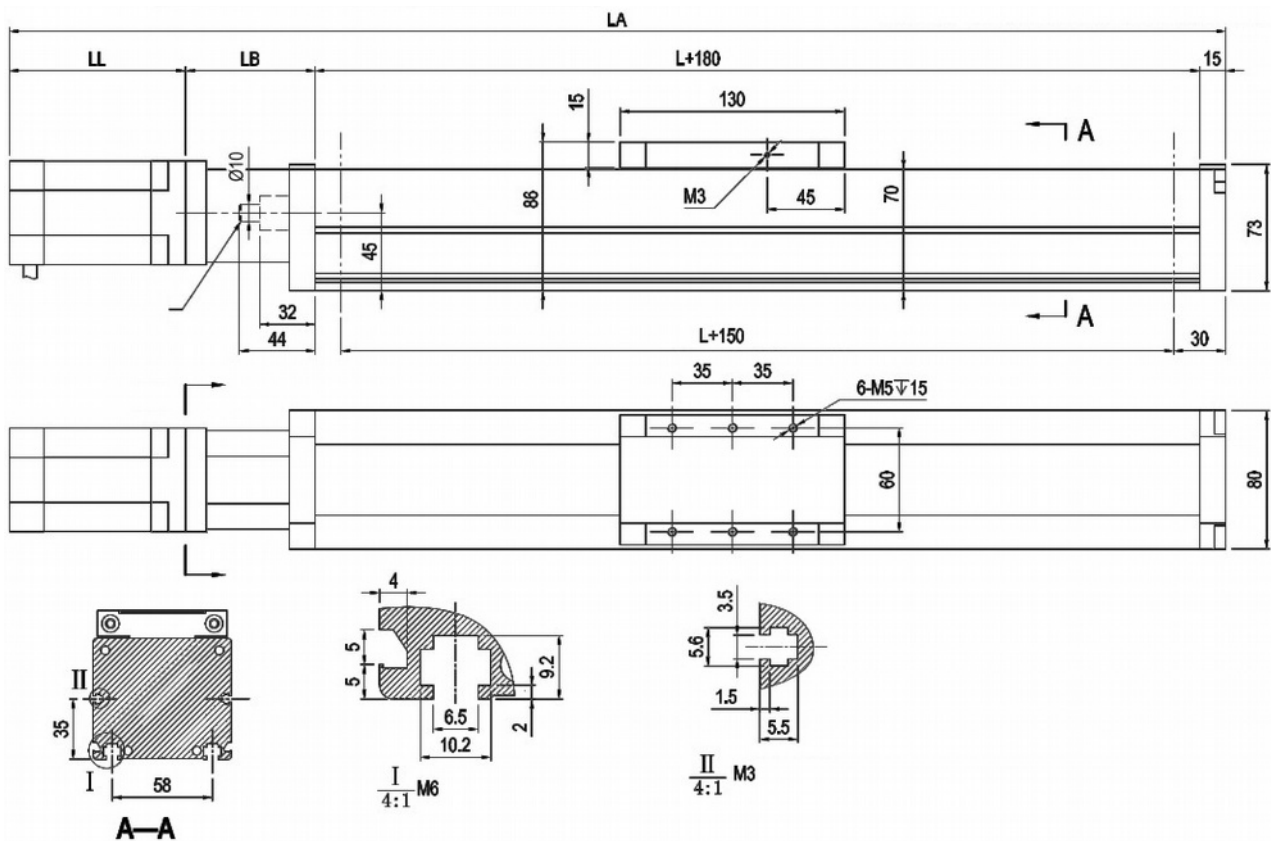
Screw lead mm/rot

05 mm
 10 mm
 16 mm
 20 mm

Screw accuracy class

C5
 C7

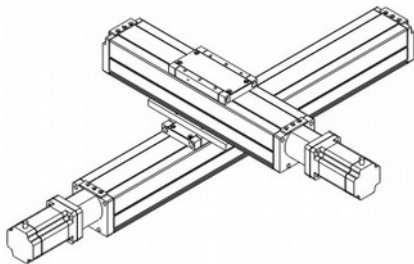
LA80-BS Dimensions



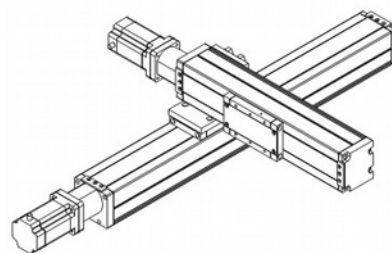
	LB	LL	LA
Stepper Motor 60x60	75	102	L+372
Stepper Motor 86x86 NEMA 34	92	98	L+368
400W Servomotor	87	130	L+412
750W Servomotor	103	138	L+436

Stroke (mm)	100	200	300	400	500	600	700	800	900	1000	1100	1200	1300	1400	1500
Total Length (mm)	472	572	672	772	872	972	1072	1172	1272	1372	1472	1572	1672	1772	1872
Weight (kg)	5.2	5.65	6.4	6.65	7.55	8.15	8.3	8.8	9.95	10.55	11.35	11.95	12.6	13.2	13.5

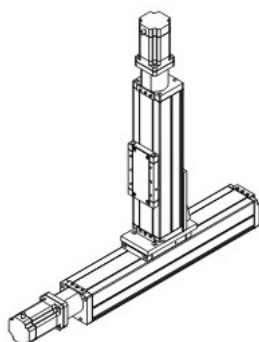
LA80-BS Ball Screw Linear Axis Configurations



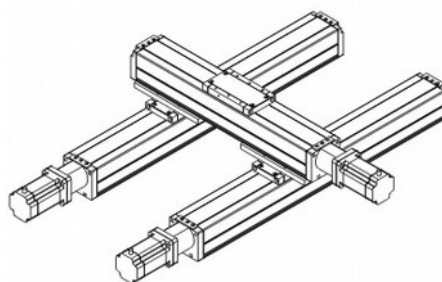
LA 80 XY - X



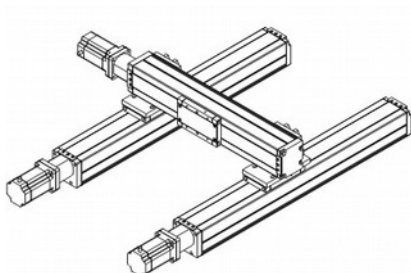
LA 80 XY - S



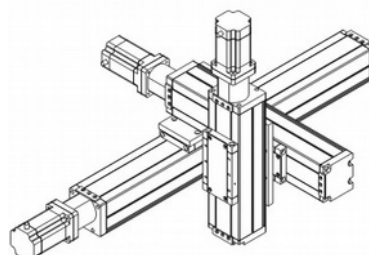
LA 80 XY - T



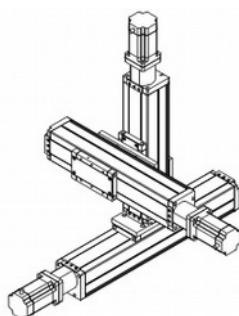
LA 80 XY - H1



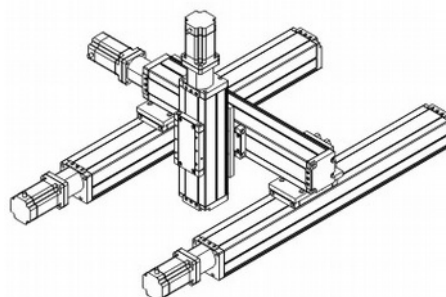
LA 80 XY - H2



LA 80 XYZ - X



LA 80 XYZ - T



LA 80 XYZ - L